

FOSPHITE®

Disease Control and Immunity Enhancing Fungicide

When crop disease pressure builds up, **FOSPHITE®** can help control downy mildew, Phytophthora, and Pythium. Registered with the EPA as a reduced-risk pesticide, **FOSPHITE®** has a four-hour re-entry interval and zero-day pre-harvest to help your crops stay on schedule.

FOSPHITE® slows down pathogen growth and suppresses sporulation. From there, phosphite ions can prime defense signals, helping crops recognize threats and respond faster. In practice, you can take action before symptoms begin showing.

Use **FOSPHITE®** across crops, ornamentals, and bedding plants as a preventive, and keep it in rotation during transplant, canopy expansion, and other stress points.



Product Profile

Form: Liquid

Function: Systemic fungicide for controlling downy mildew, Pythium, and Phytophthora

Compatibility: Compatible with most products excluding copper products

Shelf Life: Dry, cool, and shaded area



Advantages:

- Boost plant's natural immune response against pathogens
- Helps increase yield
- Improves crop quality and uniformity

Key Features

- Registered as a "reduced-risk pesticide" by the EPA
- Low phytotoxicity
- Works for both foliar and soil applied fungicide
- Low application rate



Recommended Uses

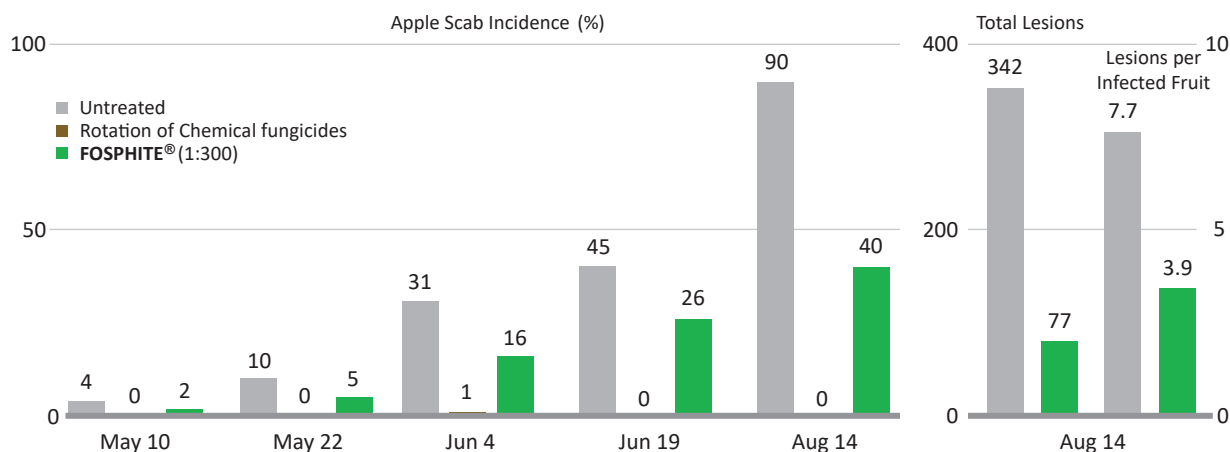
In accordance with directions, use **FOSPHITE®** as a preventive control measure to keep your crops healthy all year long.

FOSPHITE® has various application methods, including foliar sprays, soil drench, soil incorporation, bare root dip, and air application.

For foliar sprays, apply sufficient water for adequate foliage coverage specific to its growth stage.



**Effects of Treatments After the 6th Spray:
Apple Scab Incidence, Total Lesions on 50 Fruits, and Lesions per Infected Fruit**

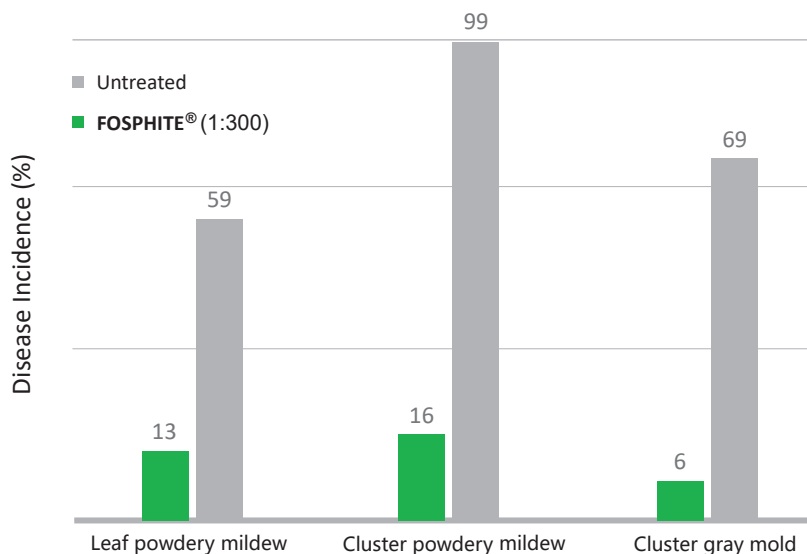


FOSPHITE® (1:300)



Untreated

Disease Effects on Grape After FOSPHITE® Application



Always read and follow label instructions